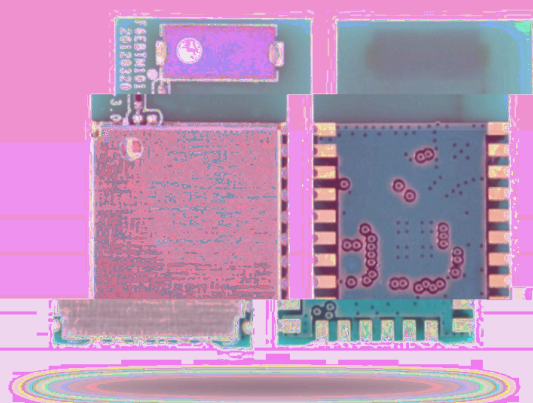


FLC-BTM101



概述:

FLC-BTM101是一款低功耗蓝牙模组 (BLE only)。模组内含 RF、基带、MCU、系统时钟、板载天线 (可选), 内置标准的蓝牙 4.0 协议栈以及不同客户端的应用设置。能使客户端的产品轻松拥有无线

健康监测、智能穿戴、智能家居。

优势:

- 低功耗
- 强大的收发及数据存储空间
- 内置蓝牙4.0协议
- 更快的连接
- 高质量、高性能
- QFN/FCC/CE

特性:

- 蓝牙4.0 (低功耗) 核心支持 BT2.1/BT2.2/BT3.0
- 支持协议包括 ATT, GATT, SMP, QoSAP, GAP
- RSSI 信号检测用于连接性能检测
- 支持 UART, I2C, SPI, 系统时钟

- 10 bits ADC
- 12个数字PIOs
- 3个模拟AIos
- UART接口
- 512 Kbits EEPROM
- Debug SPI主控接口
- 3 PWM 模组
- 唤醒中断
- 64KB的RAM和64KB的ROM
- WDT计时器

- 尺寸: 22.00mm x 13.40mm x 2.30mm (带天线); 17.00mm x 13.40mm x 2.30mm (不带天线)
- 工作温度: -30°C to +85°C (工业级BTM101I), -20°C to +75°C (消费级BTM101C)
- QFN封装, 表面封装技术, 可靠的PCB板设计
- 拥有QQB/FCC/CE认证
- 通过RoHS认证

应用:

- 智能家居: 灯光及供暖控制。
- 健康及医疗设备: 血压、血糖仪、体温监测。

Description:

FLC-BTM101 is a Bluetooth low energy (BLE) module supporting BT4.0 (BLE only). This module enables customers to add ultra-low power wireless connectivity to their products. The module provides

low power, high performance, and different application scenarios.

With the rich processing power, this module provides a comprehensive set of peripheral functions. Over conventional Bluetooth wireless technology, BTM101 supports profiles for sensors, watches, HIDs and time synchronization.

Advantage:

- Low power
- Increased application code and data space for greater application development flexibility
- Qualified Bluetooth 4.0 stack inside
- Fast and quickly connecting
- High quality, high performance
- QFN/FCC/CE

Features:

- BT4.0(BLE only)
- Include ATT, GATT, SMP, QoSAP, GAP
- RSSI monitoring for proximity applications
- 32KHz and 16MHz system clock
- 10 bits ADC
- 12 digital PIos
- 3 analogue AIos
- UART
- 512 Kbits EEPROM
- Debug SPI
- 3 PWM module
- Wake-up module
- 64KB RAM and 64KB ROM
- WDT Timer
- Size: 22.00mm*13.40mm*2.30mm(with antenna), 17.00mm*13.40mm*2.30mm (without antenna)

- Operating temperature: -30°C to +85°C (Industrial grade BTM101I), -20°C to +75°C (Consuming grade BTM101C)
- QFN package, surface mount technology
- QQB/FCC/CE
- RoHS

Application:

- Smart home: heating control and lighting control
- Health sensors: blood pressure, thermometer and glucose meters
- Sports and fitness: sensors: heart rate